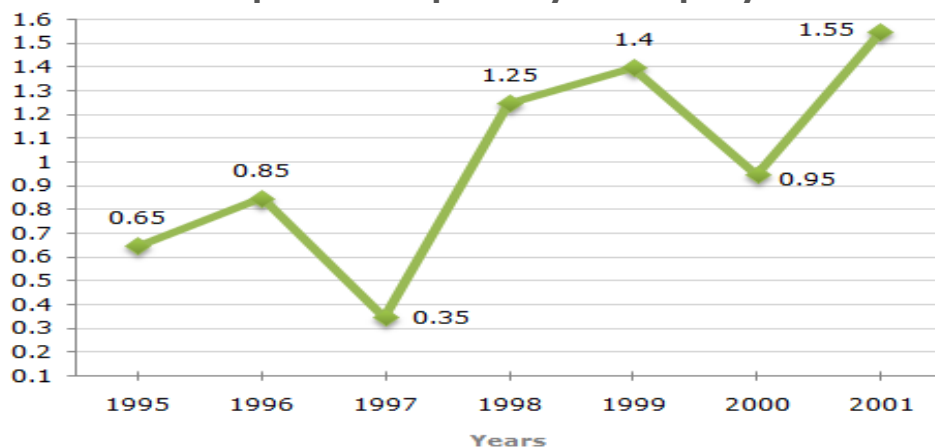


LINE CHART

EXERCISE-1

The following line graph gives the ratio of the amounts of imports by a company to the amount of exports from that company over the period from 1995 to 2001.

Ratio of Value of Imports to Exports by a Company Over the Years.



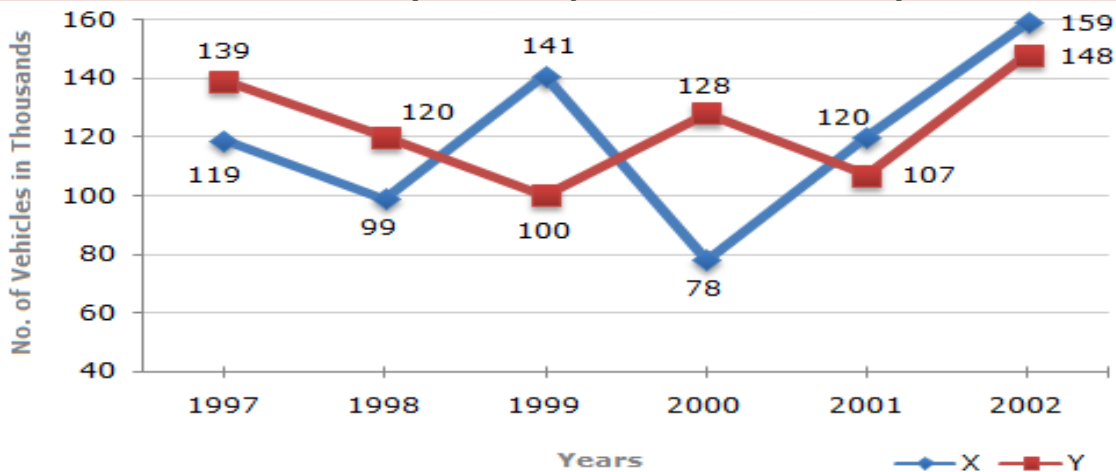
- If the imports in 1998 was Rs. 250 crores and the total exports in the years 1998 and 1999 together was Rs. 500 crores, then the imports in 1999 was ?
 - Rs. 250 crores
 - Rs. 300 crores
 - Rs. 357 crores
 - Rs. 420 crores
- The imports were minimum proportionate to the exports of the company in the year ?
 - 1995
 - 1996
 - 1997
 - 2000
- What was the percentage increase in imports from 1997 to 1998 ?
 - 72
 - 56
 - 28
 - Data inadequate
- If the imports of the company in 1996 was Rs. 272 crores, the exports from the company in 1996 was ?
 - Rs. 370 crores
 - Rs. 320 crores
 - Rs. 280 crores
 - Rs. 275 crores
- In how many of the given years were the exports more than the imports ?
 - 1
 - 2
 - 3
 - 4

LINE CHART

EXERCISE-2

Study the following line graph and answer the questions based on it.

Number of Vehicles Manufactured by Two companies over the Years (Number in Thousands)



- What is the difference between the number of vehicles manufactured by Company Y in 2000 and 2001 ?
A. 50000
B. 42000
C. 33000
D. 21000
- What is the difference between the total productions of the two Companies in the given years ?
A. 19000
B. 22000
C. 26000
D. 28000
- What is the average numbers of vehicles manufactured by Company X over the given period ? (rounded off to nearest integer)
A. 119333
B. 113666
C. 112778
D. 111223
- In which of the following years, the difference between the productions of Companies X and Y was the maximum among the given years ?
A. 1997
B. 1998
C. 1999
D. 2000
- The production of Company Y in 2000 was approximately what percent of the production of Company X in the same year ?
A. 173
B. 164
C. 132
D. 97

GOUR INSTITUTE

PSC, Bank (Clerk/PO), SSC, Railways, S.I., Classes

Director - Rajeev Sir, Mob. & WhatsApp No.  9826072042

F – 12, City Bazar, Thatipur, Gwalior (M.P.) www.gourinstitute.in

ANSWER SHEET

LINE CHART EXERCISE - 1

1	2	3	4	5
D	C	D	B	D

LINE CHART EXERCISE - 2

1	2	3	4	5
D	C	A	D	B